

M/P2R.1
 KNX Granite/Metal Push Button Panel EU
 M/P3R.1
 KNX Granite/Metal Push Button Panel US
 Hardware Version: A



Datasheet
 Issued: July 26, 2019
 Edition: V1.0.0

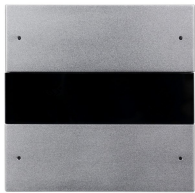


Figure 1. M/P2R.1



Figure 2. M/P3R.1

Customizable label

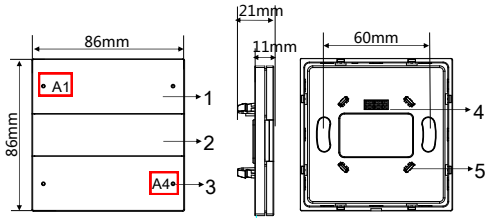


Figure 3

Figure 4

Figure 5

M/P2R.1

Figure 3 - 5. Dimensions

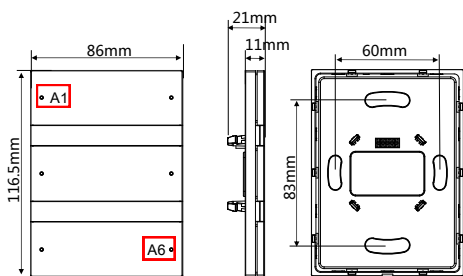


Figure 6

Figure 7

Figure 8

M/P3R.1

Figure 6 - 8. Dimensions

Overview

KNX Granite (See Figure 1-2) is a multi-function panel, which supports multiple control modes. It is embedded with RGB light for each button. Any color and brightness of label backlight and button indicator can be set in ETS software.

Functions

- Mechanical buttons and button backlights are available;
- Supports button work modes: Left & right button combination mode or independent button mode;
- Adjustable color and brightness of the label backlight and button indicator;
- Supports multiple control modes: Switch control, dimming control, Shutter control, Flexible control, Scene control, Sequence control, Percentage control, Threshold control, String (14 bytes) control, Alternate control, RGB control, Fan control, Thermostat control, Combination control;
- With built-in temperature probe, the panel can automatically obtain the temperature information;
- The button indicator can be displayed mutual exclusively;
- Press the top left corner and the lower right corner button(A1 and A4 for M/P2R.1, A1 and A6 for M/P3R.1) simultaneously for 2 seconds, the panel will enter programming mode.

Important Notes

- The panel must be wall box mounted.
- It must work in conjunction with the power interface (M/PCI.1-A in conjunction with EU panel, M/PCI.3-A in conjunction with US panel).
- The device is compliant with KNX standard and the parameters are set by the Engineering Tool Software (ETS).

Product Information

Dimensions - See Figure 3 - 8

- 1. Control button:** It is used to control the status of the targets
- 2. Label backlight:** It is for label backlight. The brightness can be automatically adjusted. The color and brightness of the indicator can be customized by user.
- 3. Button indicator:** It is used to indicate the status of the targets. The color and brightness of the indicator can be customized by user.
- 4. Communication interface:** It connects to panel power interface.
- 5. Fastener:** It connects to panel power interface.

Programming: Press the top left corner and the lower right corner button(A1 and A4 for M/P2R.1, A1 and A6 for M/P3R.1) simultaneously for 2 seconds, the panel will enter programming mode.

Product installation and disassembly (Take M/P2R.1 as an example)

Installation - See Figure 9 - 11

- Step 1. Fix the power interface into the wall box with screws.
- Step 2. Hold the edge of the panel, then insert the panel into the power interface module vertically.

Disassembly - See Figure 12

- Step 1. Insert the panel gap with a slotted screwdriver.
- Step 2. Pry up the panel gently and hold the edge panel. Then the panel can be taken off.

Glass replacement - See Figure 13 - 16 (Take M/P3R.1 as an example)

- Step 1. Insert the split gap on the left and right of the metal covers and the right split gap of the glasses with a slotted screwdriver, and pry gently, then remove the metal covers and glasses.
- Step 2. Align the new glasses and the original metal covers with the panel buckle and gently press to complete the glass replacement.

Safety Precautions

- The installation and commissioning of the device must be carried out by HDL or the organization designated by HDL. For planning and construction of electric installations, the relevant guidelines, regulations and standards of the respective country are to be considered.
- The device should be wall box mounted. HDL takes no responsibility for all consequences caused by installation and wire connection which are not in accordance with this document.
- Please do not privately disassemble the device or change components, otherwise it may cause mechanical failure, electric shock, fire or body injury.
- Please resort to our customer service department or designated agencies for maintenance service. The warranty is not applicable for the product fault caused by private disassembly.

Package Contents

M/P2R.1 or M/P3R.1*1 / Datasheet*1

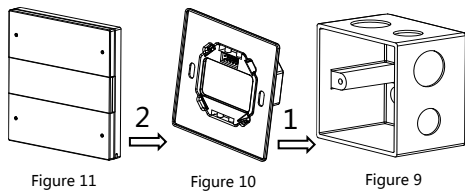


Figure 9 – 11. Installation

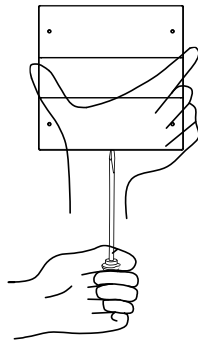


Figure 12. Disassembly

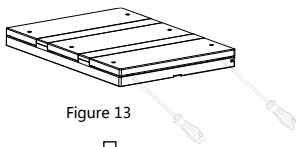


Figure 13

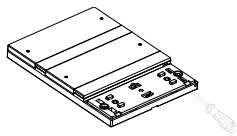


Figure 14

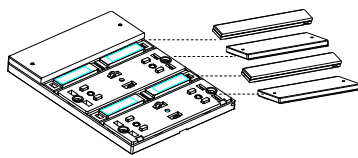


Figure 15

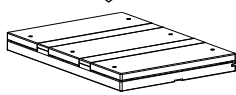


Figure 16

Figure 13 – 16. Glass replacement

Technical Data

Basic Parameters

| | |
|--------------------------------|--------------|
| Working voltage | 21~30V DC |
| Working current | 6mA / 30V DC |
| Communication | KNX |
| Cable diameter of KNX terminal | 0.6 - 0.8mm |

External Environment

| | |
|---------------------------|------------|
| Working temperature | -5°C~45°C |
| Working relative humidity | ≤90% |
| Storage temperature | -20°C~60°C |
| Storage relative humidity | ≤93% |

Specifications

| | |
|---|---|
| Dimensions | M/P2R.1: 86×86×11(mm) M/P3R.1: 86×116.5×11(mm) |
| Net weight | M/P2R.1: 109g M/P3R.1: 138g |
| Housing material | Glass, PC, ABS, Aluminum |
| Installation | Wall box (See Figure 9 - 11) |
| Protection rating (Compliant with EN 60529) | IP20 |

Name and Content of Hazardous Substances in Products

| Components | Hazardous substances | | | | | |
|------------|----------------------|--------------|--------------|-----------------------|---------------------------------|--|
| | Lead (Pb) | Mercury (Hg) | Cadmium (Cd) | Chromium VI (Cr (VI)) | Poly-brominated biphenyls (PBB) | Poly-brominated diphenyl ethers (PBDE) |
| Plastic | o | o | o | o | o | o |
| Hardware | o | o | o | o | - | - |
| Screw | o | o | o | x | - | - |
| Solder | x | o | o | o | - | - |
| PCB | x | o | o | o | o | o |
| IC | o | o | o | o | x | x |
| Glass | o | o | o | o | o | o |

The symbol “-” indicates that the hazardous substance is not contained.

The symbol “o” indicates that the content of the hazardous substances in all the homogeneous materials of the component is below the limit requirement specified in the Standard IEC62321-2015.

The symbol “x” indicates that the content of the hazardous substance in at least one of the homogeneous materials of the part exceeds the limit requirement specified in the Standard IEC62321-2015.

KNX Cable Guide

| KNX | KNX Cable |
|-----|-----------|
| + | Red |
| - | Black |

Technical support

E-mail: support@hdlautomation.com

Website: <https://www.hdlautomation.com>

©Copyright by HDL Automation Co., Ltd. All rights reserved.
Specifications subject to change without notice.